

Suicide in Idaho

2017-2021

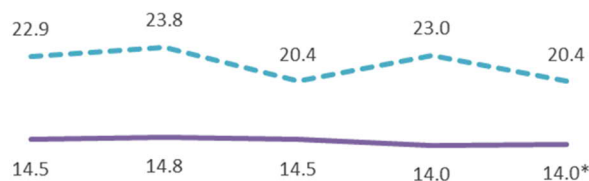
- The statewide suicide rate for 2021 decreased by over 14% since 2018’s historical high.
- Firearms were the most common method of injury, used in 63% of Idaho suicides.
- Males were far more likely than females to die by suicide, representing 8-in-10 Idaho suicides.
- Suicide remained the 2nd leading cause of death among Idahoans aged 10-24 in 2021.
- Between 2017-2021, 132 Idaho school children (ages 10-18 years old) died by suicide; 34 of those deaths were to children age 14 or younger.
- Suicide rates were highest in less densely populated counties where mental health services are limited.

Idaho Resident Suicides by Public Health District

District	Anchor City	2021	Rate (per 100,000)	Population 2021
1	Coeur D’Alene	46	17.3-	265,384
2	Lewiston	29	25.8+	112,417
3	Nampa	58	18.3-	317,116
4	Boise	109	19.4+	561,093
5	Twin Falls	48	22.8-	210,983
6	Pocatello	46	25.5+	180,676
7	Idaho Falls	51	20.1-	253,254
Idaho Overall		387	20.4-	1,900,923

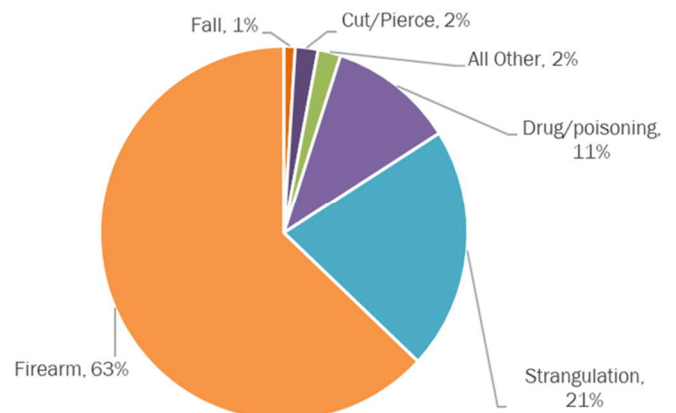
+ Increase since prior year
- Decrease since prior year

Idaho & U.S. Rates by Year 2017-2021

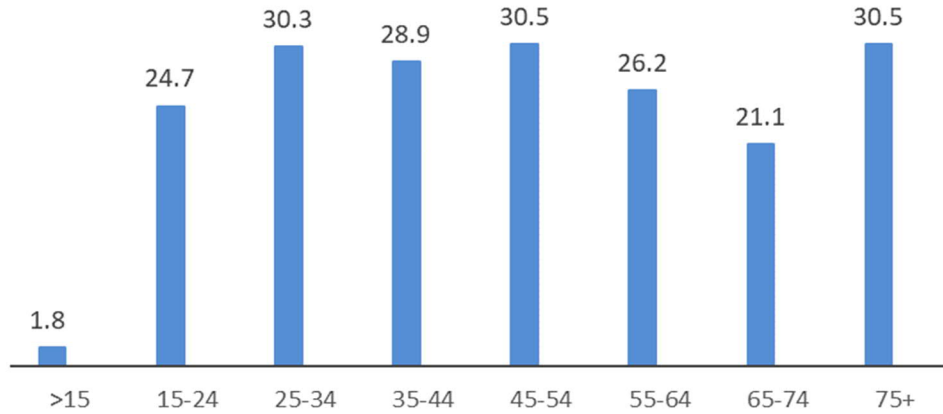


2017 2018 2019 2020 2021
 --- ID Rate --- US Rate
 Rate per 100,000 population. * 2021 US rate is provisional

Method of Injury, 2017-2021

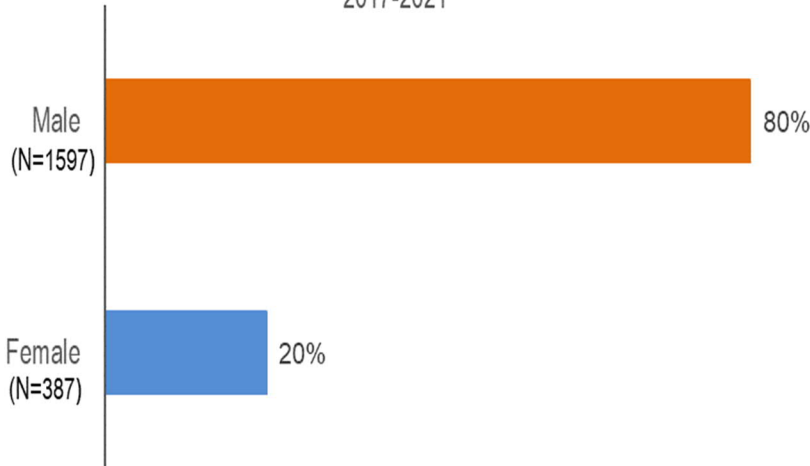


Idaho Suicide Rates by Age 2017-2021

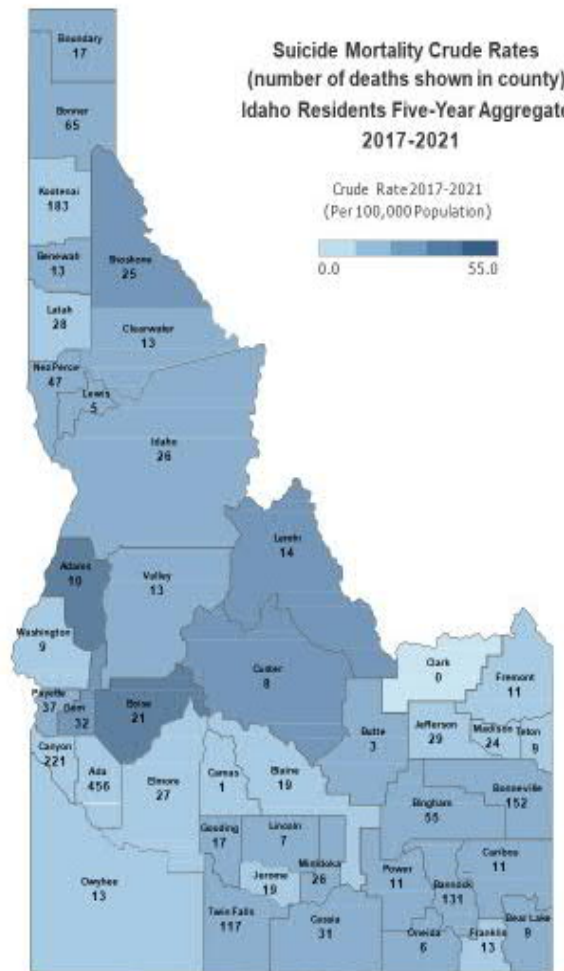


Rate per 100,000 population

Percent of Idaho Suicides by Sex 2017-2021



Suicide Mortality Crude Rates (number of deaths shown in county) Idaho Residents Five-Year Aggregate 2017-2021



Suicide Prevention Program
450 West State Street, 3rd Floor
P.O. Box 83720
Boise, Idaho 83702-0036
208-334-4953



Data are for Idaho resident deaths due to suicide. Rates are based on July 1 population estimates in the corresponding year released by NCHS and U.S. Census Bureau.

Source: Idaho Violent Death Reporting System; Bureau of Vital Records and Health Statistics; Division of Public Health, January 2023

For more information including preliminary 2022-23 Idaho suicide data see www.gethealthy.dhw.idaho.gov/idaho-vdrs